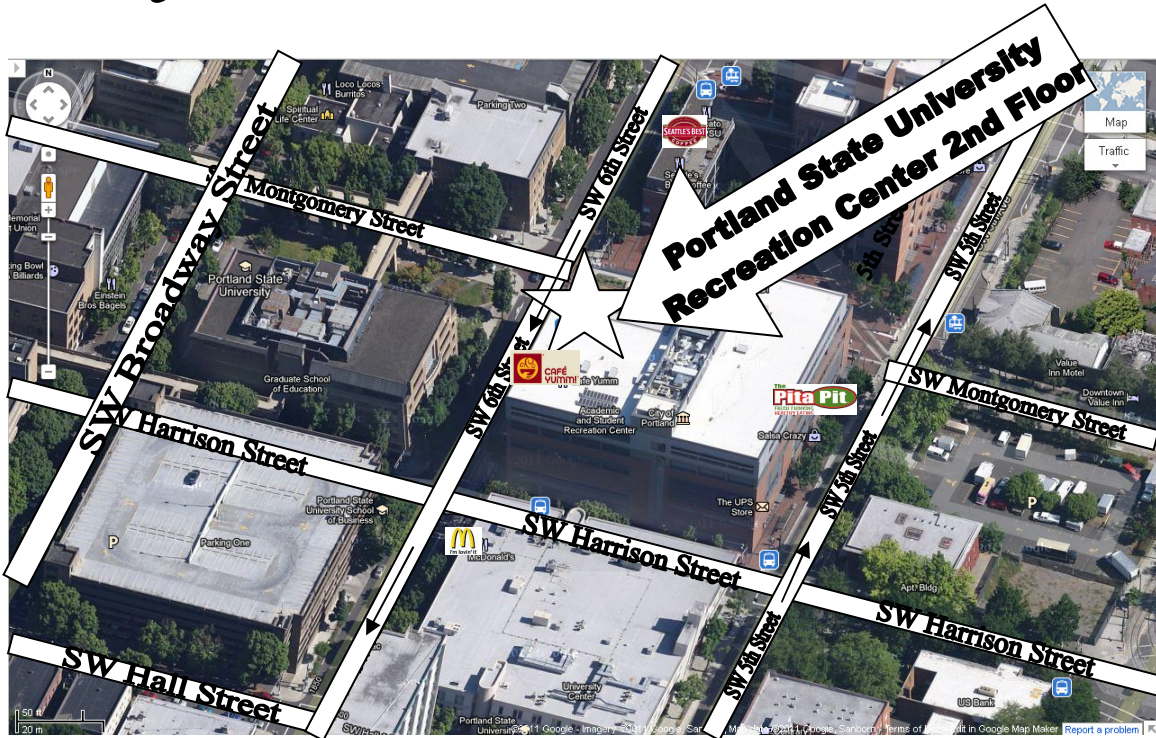


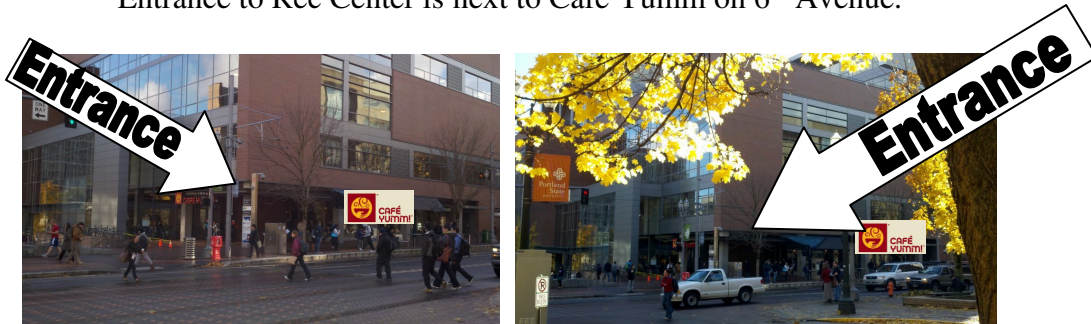
Reminders:  
Reply by  
January 27th



Questions on February 4th?  
Contact 503-330-1816



Entrance to Rec Center is next to Café Yumm on 6<sup>th</sup> Avenue.



Full Directions available at <http://www.marathoneducationpartners.org/events/25/2012-annual-partner-scholar-family-winter-event/>

**Attire:** Athletic Clothing and footwear, swim wear if desired.  
**Activities:** Rock-climbing, swimming,  
basketball, volleyball,  
table tennis, crafts and board games.

# Marathon's Annual Partner-Scholar Family Winter Event

Saturday, February 4, 2012

Portland State University,

Recreation Center

Time: 6:00pm-9:00pm



Please RSVP with # of guests at 503-235-2500 or

[leah@marathoneducationpartners.org](mailto:leah@marathoneducationpartners.org)

**Dinner  
provided!**

by January 27, 2012

